



## **Recycle Disassemble Instruction (Dismantled Information)**

**Requirements according to ANNEX VII of DIRECTIVE 2012/19/EU  
on waste electrical and electronic equipment (WEEE)**

### **Materials and components with hazardous content**

LCDs may contain hazardous substances like Pb and BFRs which are covered by exemptions under the RoHS directive. However, the majority is present in the printed circuit boards assembly. In order to reduce emissions as much as possible, a complete disposal of the old appliance is required. This treatment may only be performed in authorized handling plants.








**Product Name:** LCD Monitor

**Model No.:** PD3200U





## Disassembly Tools

Tool	picture
Philips Screwdriver for M3 Screw	 A Philips screwdriver with a red handle and a silver shaft, lying horizontally on a light brown wooden surface.
Nosed Pliers	 A pair of red-handled nose pliers with long, thin jaws, lying horizontally on a light brown wooden surface.
Diagonal Cutting Pliers	 A pair of red-handled diagonal cutting pliers with short, thick jaws, lying horizontally on a light brown wooden surface.
Slotted screwdriver	 A slotted screwdriver with a green handle and a silver shaft, lying horizontally on a light brown wooden surface.
Six Point Sockets	 A six-point socket screwdriver with a yellow handle and a silver shaft, lying horizontally on a light brown wooden surface.
Philips Screwdriver for M2.5 Screw	 A Philips screwdriver with a red handle and a silver shaft, lying horizontally on a light brown wooden surface.
Knife	 A folding knife with a silver handle and a silver blade, lying horizontally on a light brown wooden surface.



## **Disassembly process**

### **1) Remove the stand.**

Holding the stand and press the button, and so you can remove the stand.



### **2) Remove the rear cover**

Unscrew the screws from the rear cover.



Pull apart bezel & rear cover.

**Note: Be careful, the BEZEL CLIP is easy to break.**



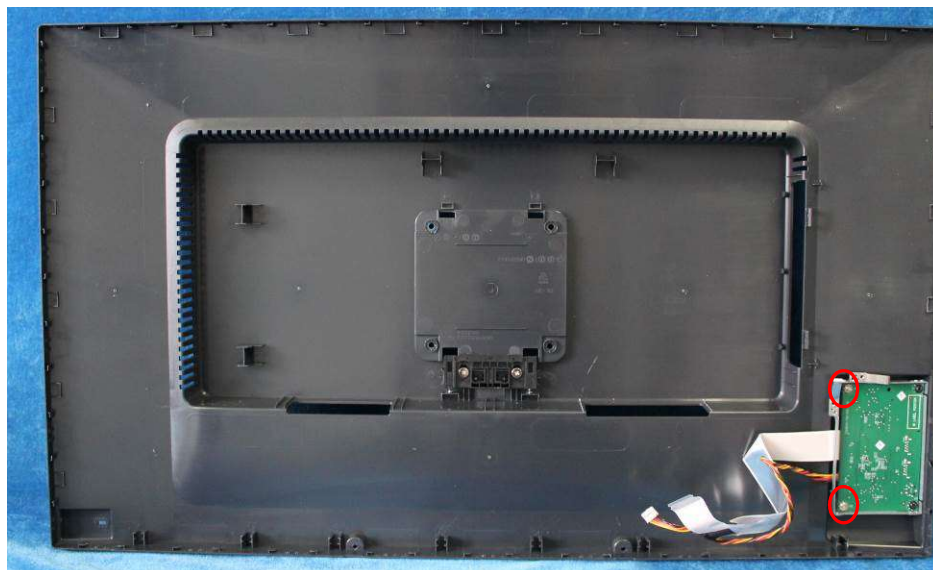


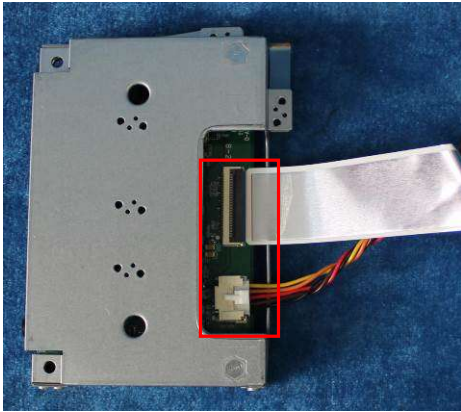


Disconnect the connectors as below to remove the rear cover.

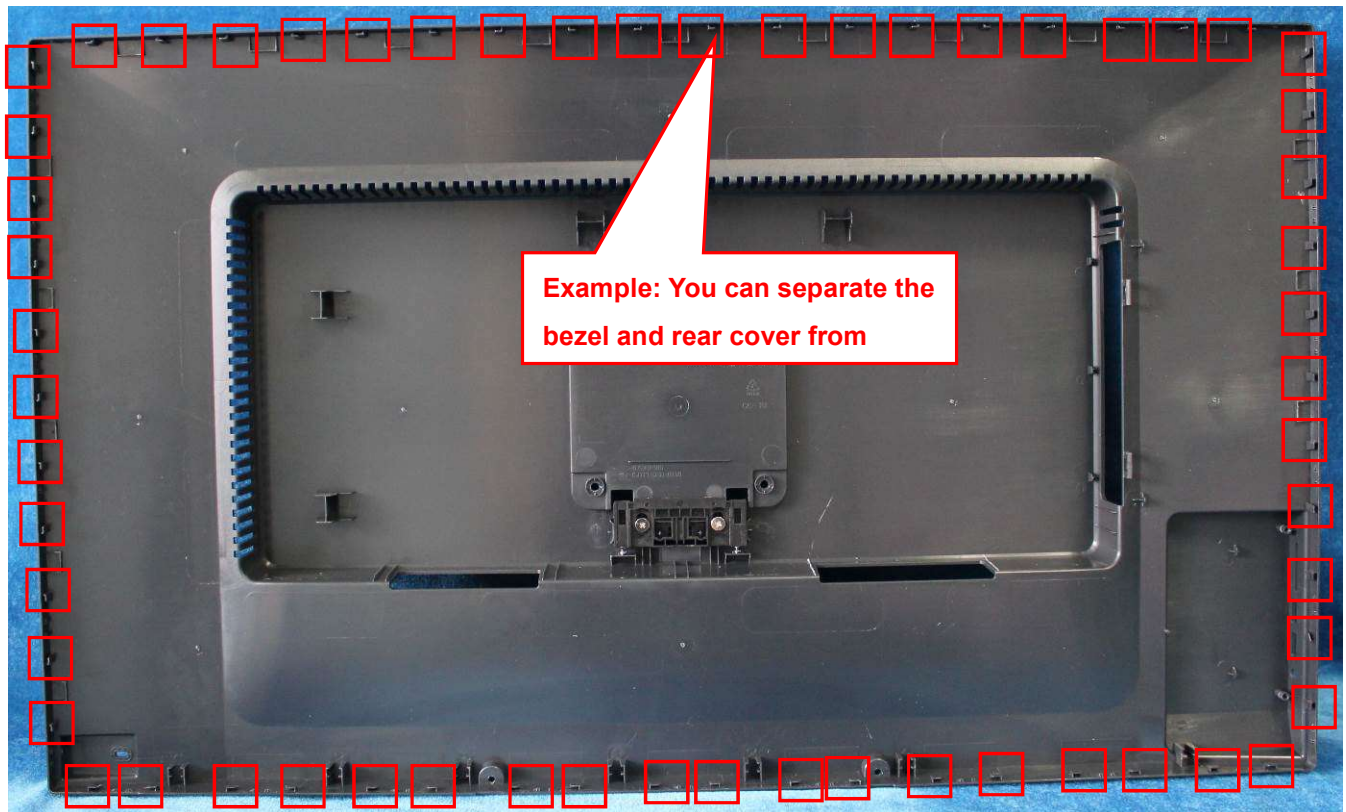


Unscrew the screws and disconnect the connectors to remove the USB board,





**Note:** The positions of the clips on the rear cover are as follow. There are some small gaps between CLIPS. It's suggested to separate bezel and rear cover from the gaps.

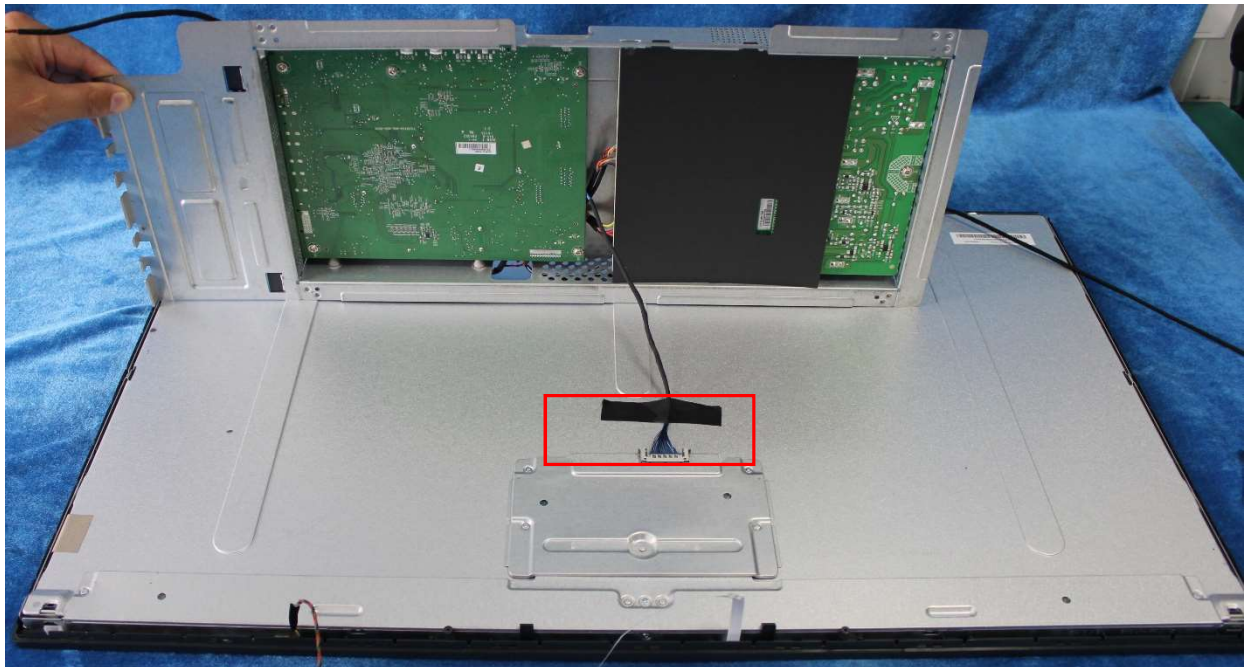
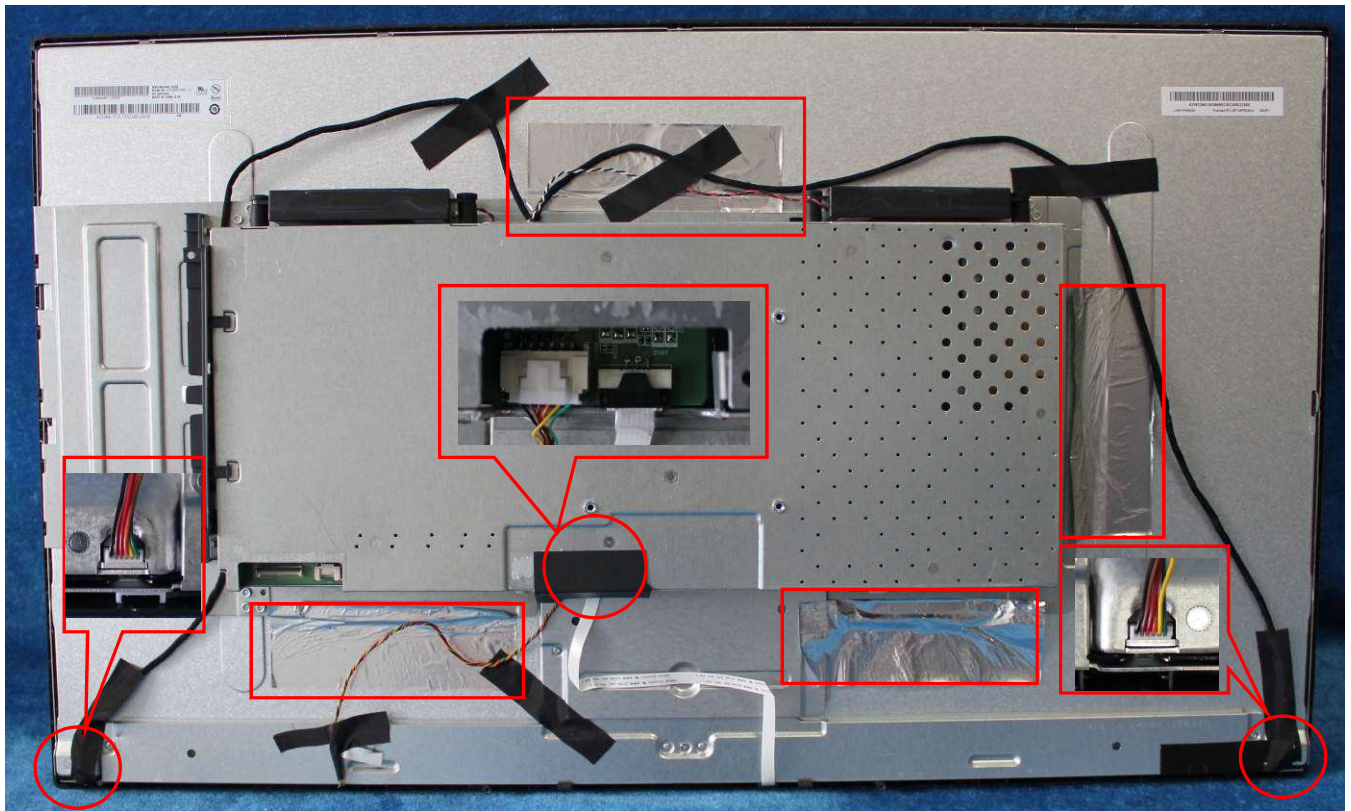


### 3) Remove the main frame from the panel.

Remove the aluminum foil; pull out the wire marked in red circles to remove the mainframe.

**Note:** When you assembled the LCD, you must tidy the wire as follow picture.



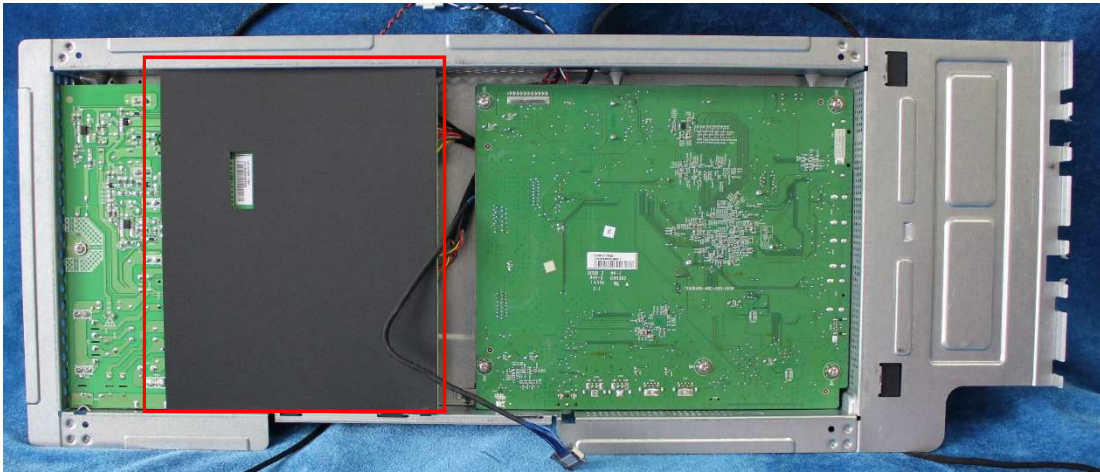




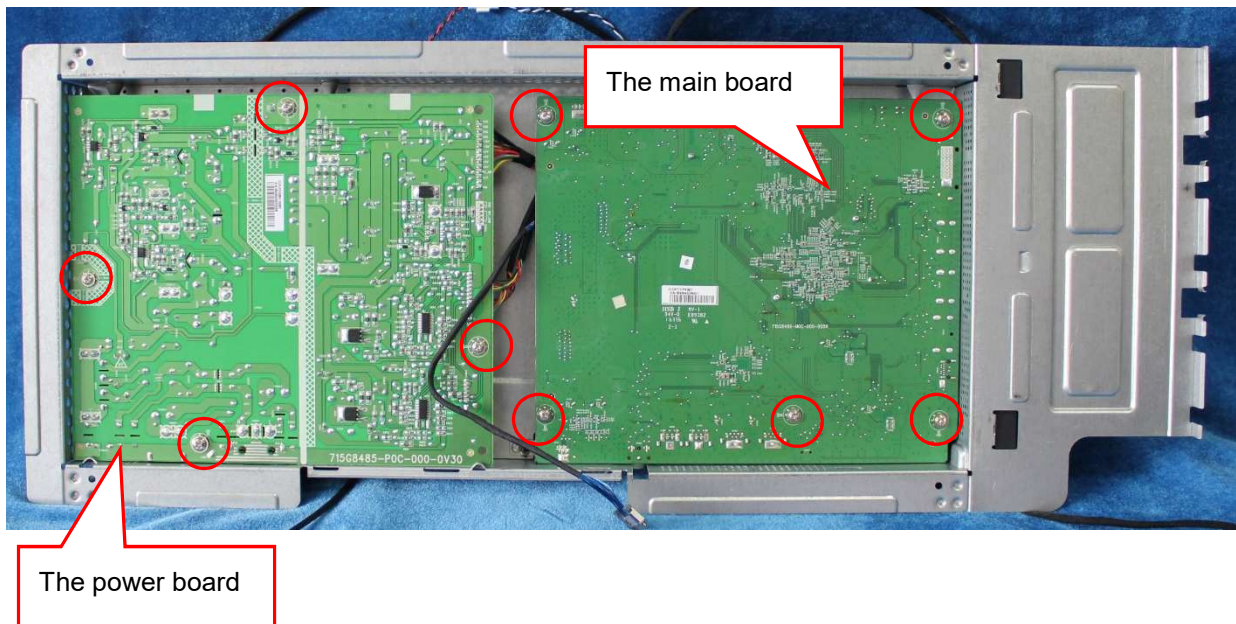


#### 4) Remove the boards from the main frame

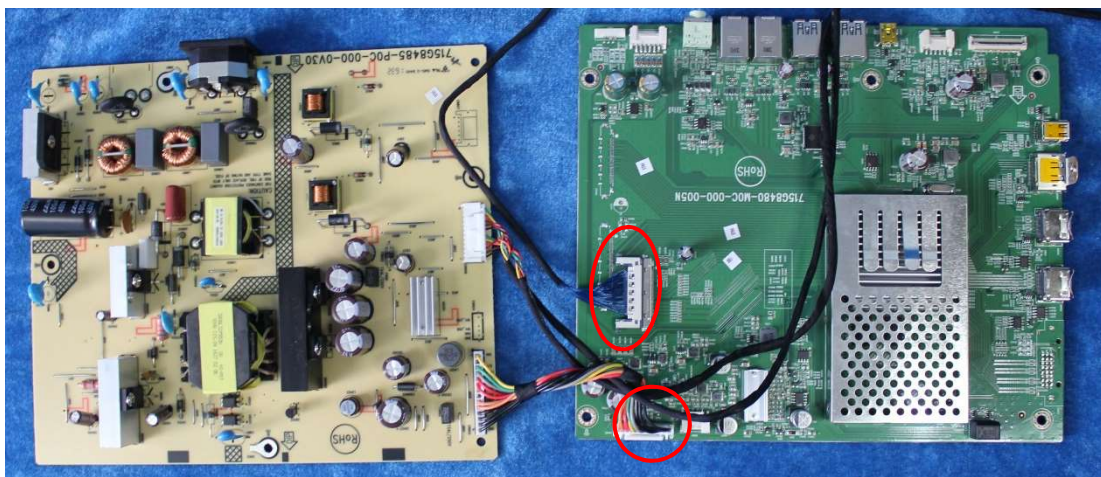
Remove the mylar from the mainframe.



And then remove screws in red, pull out the wire to remove the main board and power board.



Turn over the power board and main board; remove the cables.







**5) Remove the speaker**

Pull at the foot of the speaker strongly as follow picture.

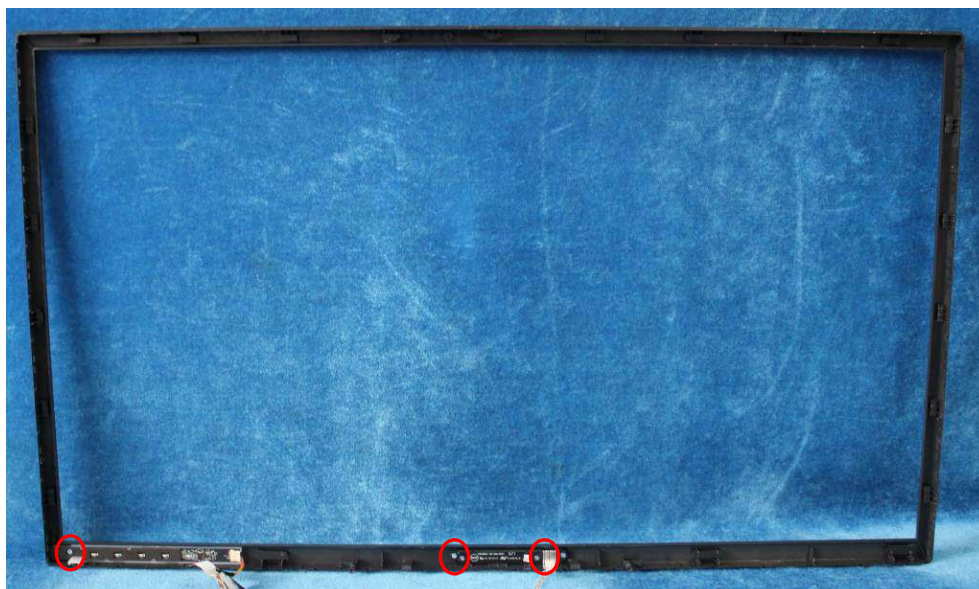


**6) Remove the panel**

**Note:** Be course the panel is easy to broken, when we remove the panel, we should hold the iron on the panel edge use two hands at the same time, and should avoid touching the panel surface.



**7) Remove the key board and daughter board from bezel.**





## **Disassembly Time**

Total time: 30 minutes